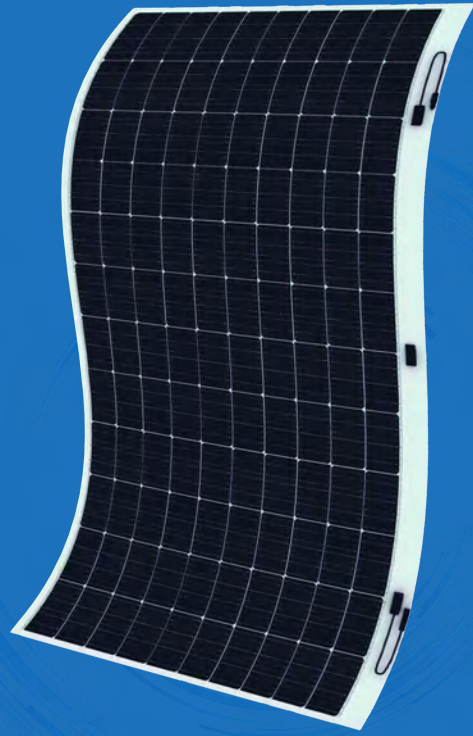




430W~445W

MONO-FLEXIBLE MODULE

IEC61215(2016),IEC61730(2016)
ISO9001:2015 Quality Management System
ISO14001:2015 Environment Management System
ISO45001:2018 Occupational Health and Safety Management System



Key Features



Lightweight

Optimized composite materials, 60% lighter at the same power.



Resin-fiber Strength Improvement

The modulus is as high as 1300MPa, improving the overall strength of the module and solving the hidden crack problem of the cell.



Self-developed Polymer Materials

Light transmittance $\geq 91\%$, far more than conventional solar panels, photoelectricity conversion without a barrier. Ultra-high UV blocking ability ensures power generation efficiency for 25 years.

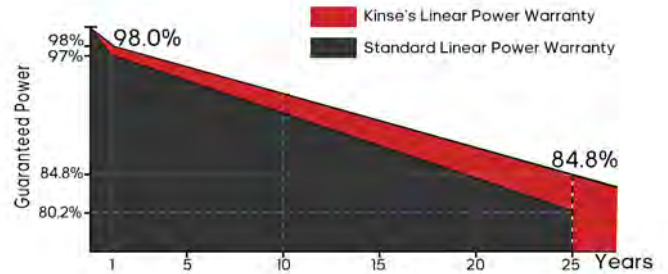


Easy to Install

Factory-integrated for easy transportation and handling; Eliminating traditional bracket systems and saving installation costs and time.

* Specifications subject to technical changes and tests. Kinse Solar reserves the right of interpretation.

Linear Performance Warranty



Leading product and power warranty

12YEAR Materials and workmanship warranty

25YEAR Linear power warranty



Maanshan Kinse Energy Technology Co. LTD

Add:No.9,Tagang Industrial Park,Tongzha Town,Hanshan County,Ma'anshan City
Email: info@kinse-solar.com Phone Number: +86-0555-2581308



Web



WeChat



WhatsApp

Electrical Characteristics

Module Type	KS430-120-M182-FL		KS435-120-M182-FL		KS440-120-M182-FL		KS445-120-M182-FL	
	STC	NOCT	STC	NOCT	STC	NOCT	STC	NOCT
Test conditions	STC	NOCT	STC	NOCT	STC	NOCT	STC	NOCT
Maximum Power(Pmax)[W]	430	320	435	324	440	328	445	332
Maximum Power Voltage(Vmp)[V]	33.50	31.05	33.70	31.21	33.90	31.39	34.10	31.57
Maximum Power Current (Imp)[A]	12.82	10.34	12.90	10.39	12.98	10.45	13.06	10.51
Open-circuit Voltage (Voc)[V]	40.60	38.31	40.80	38.45	41.00	38.59	41.20	38.73
Short-circuit Current (Isc)[A]	13.25	10.95	13.33	11.01	13.41	11.07	13.49	11.13
Module Efficiency STC(%)	18.77		18.99		19.21		19.42	

*STC : Irradiance at 1000 W/m², Cell Temperature 25°C, Air Mass AM1.5

*NOCT : Irradiance at 800W/m². Ambient Temperature 20°C , Wind Speed 1 m/s

Mechanical Characteristics

Cell Type	Mono-crystalline 182 * 91 mm
No. of cells	120(12 x 10)
Dimensions	2246 * 1020 * 2.6 mm
Weight	7.6 Kg
Junction Box	IP68 Rated
Output Cables	4.0 mm ²
Cable Length	400mm or Customized Length

Application parameters

Maximum system voltage	DC1500V(IEC)
Maximum series fuse rating	25A
Power tolerance	0 ~ +5W

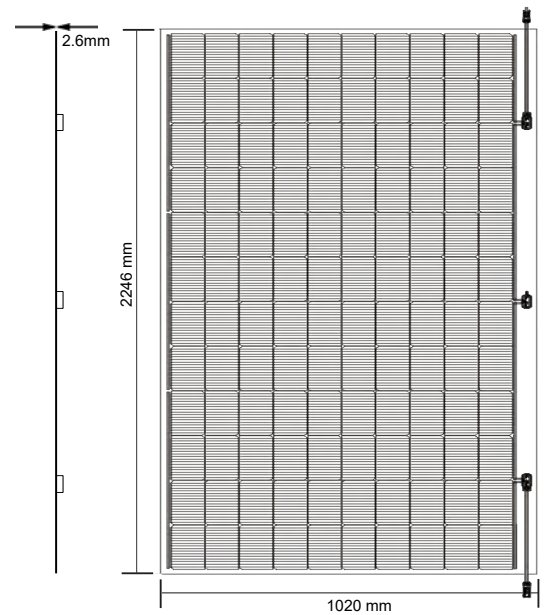
Temperature coefficient

Temperature coefficients of Pmax	-0.37 %/ °C
Temperature coefficients of Voc	-0.28 %/ °C
Temperature coefficients of Isc	0.05 %/ °C
Operating Temperature	-40 °C ~ +85 °C
Nominal operating cell temperature (NOCT)	45±2 °C

Packaging Configuration

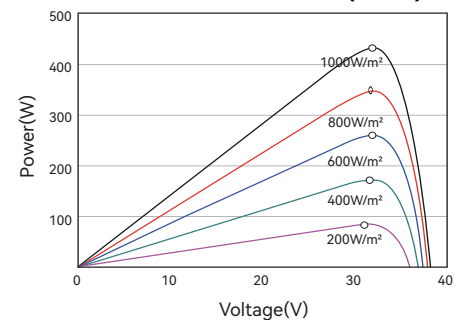
70pcs/pallets, 1400pcs/ 40'HQ Container

Dimension

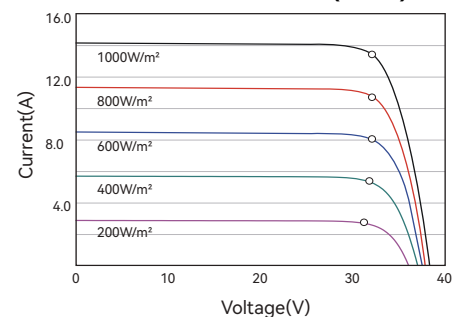


Electrical Performance

P-V Curves of PV Module (440W)



I-V Curves of PV Module (440W)



Maanshan Kinse Energy Technology Co. LTD

Add.No.9,Tagang Industrial Park,Tongzha Town,Hanshan County,Ma'anshan City
Email: info@kinse-solar.com Phone Number: +86-0555-2581308



Web



WeChat



WhatsApp