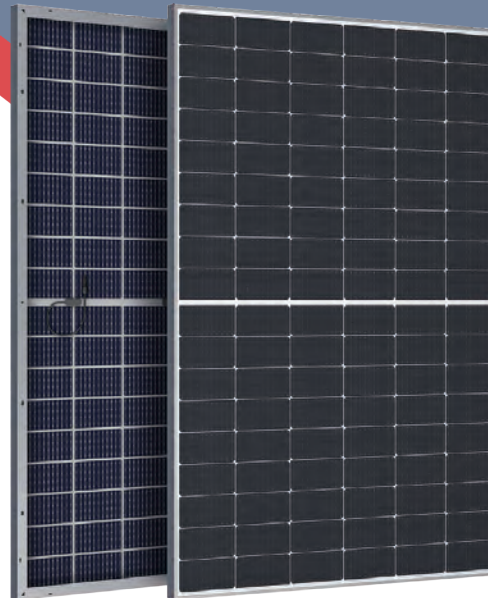




Bifacial Module

420W ~ 440W



TOPCon
Bifacial Module

22.53%
Max Efficiency

12 Years
Product Warranty



Higher power output

The use of high-efficiency multi-gate and cell half-chip design significantly increases the output power of the product.



Excellent temp coefficient

The product's excellent temperature coefficient characteristics result in superior outdoor power generation performance and longer service life.



Reduce hot spots

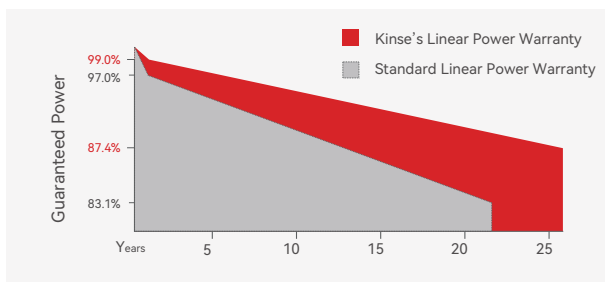
Reduced operating current through better product design, thus reducing the risk of hot spots.



Long-term reliability

Reduce the attenuation caused by PID with production technology optimization and material control.

Linear Performance Warranty



12-Year product warranty



25-Year linear power output warranty

Product and system certifications



IEC61215 (2016), IEC61730 (2016)

ISO9001:2015 Quality Management System

ISO14001:2015 Environmental Management System

ISO45001:2018 Occupational Health and Safety Management System

* Specifications subject to technical changes and tests. Kinse Solar reserves the right of interpretation.

Electrical Characteristics

Module Type	KS420-108-M182		KS425-108-M182		KS430-108-M182		KS435-108-M182		KS440-108-M182	
	STC	NMOT	STC	NMOT	STC	NMOT	STC	NMOT	STC	NMOT
Maximum Power(Pmax)[W]	420	322	425	326	430	330	435	334	440	338
Maximum Power Voltage(Vmp)[V]	31.51	30.10	31.70	30.20	31.89	30.30	32.08	30.40	32.28	30.50
Maximum Power Current (Imp)[A]	13.33	10.62	13.41	10.67	13.49	10.74	13.56	10.80	13.64	10.87
Open-circuit Voltage (Voc)[V]	38.13	36.20	38.32	36.40	38.51	36.60	38.69	36.80	38.89	37.00
Short-circuit Current (Isc)[A]	14.03	11.27	14.09	11.33	14.15	11.38	14.22	11.44	14.30	11.49
Module Efficiency STC(%)	21.51%		21.76%		22.02%		22.28%		22.53%	

* STC : Irradiance at 1000 W/m², Cell Temperature 25°C, Air Mass AM1.5

* NMOT: Irradiance at 800W/m², Ambient Temperature 20°C , Wind Speed 1 m/s

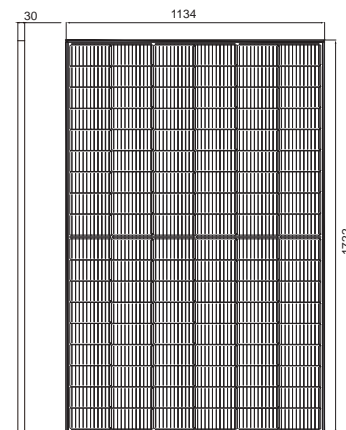
Note: The electrical performance parameters in the catalog are used to compare different components and do not represent specific performance commitments for individual components.

Electrical Characteristics with 10% Solar Irradiation Ratio

Module Type	KS420-108-M182	KS425-108-M182	KS430-108-M182	KS435-108-M182	KS440-108-M182
Maximum Power (Pmax)	462	468	473	479	484
Maximum Power Voltage (Vmp)	31.51	31.70	31.89	32.08	32.28
Maximum Power Current (Imp)	14.66	14.75	14.84	14.92	15.01
Open-circuit Voltage (Voc)	38.13	38.32	38.51	38.69	38.89
Short-circuit Current (Isc)	15.43	15.50	15.57	15.64	15.71

Dimensions

Unit: mm



Front View

Mechanical Parameters

Cell Type	Monocrystalline (182mm)	No. of Cells	108 [2 x (9 x 6)]
Dimensions	1722*1134*30mm	Weight	24.0kg
Glass	2mm-2mm	Encapsulant Material	EVA/POE
Frame	Anodized Aluminium Alloy	Fire safety class	Class C
Output Cable	4.0mm ² , 300/300mm	Connector	MC4 Compatible

Temperature Ratings

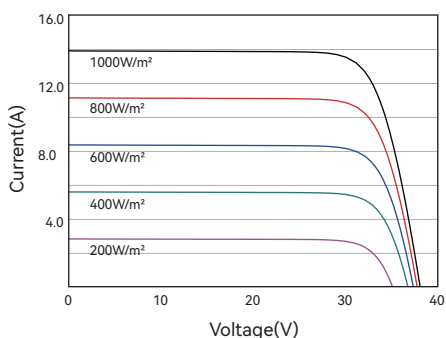
Nominal operating cell temperature (NOCT)	42°C ± 2°C
Temperature Coefficient of Pmax	-0.31%/°C
Temperature Coefficient of Voc	-0.26%/°C
Temperature Coefficient of Isc	+0.046%/°C

Operating Parameters

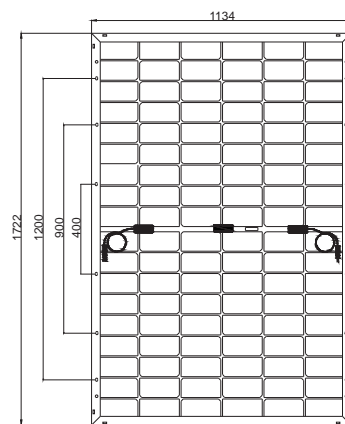
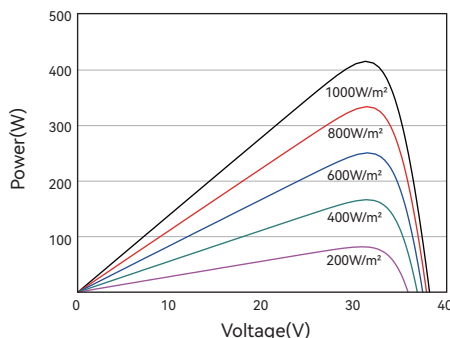
Operational Temperature	-40°C~+85°C
Maximum System Voltage	1500V DC (IEC)
Maximum Series Fuse Rating	30A
Bifaciality	80%-85%

Electrical Performance

I-V Curves of PV Module (420W)



P-V Curves of PV Module (420W)



Back View

Packaging

Pcs per Pallet: 36

Pcs per 40' HC: 936

Maanshan Kinse Energy Technology Co. LTD

Add: No.9,Tagang Industrial Park,Tongzha Town,Hanshan County,Ma'anshan City,Anhui Province
 Email: info@kinse-solar.com Phone Number: +86 555 2581308



Web



Wechat



WhatsApp